

Housing Overview 18 buildings and over 3,000 units of housing



PERMANENT HOUSING



1
THE TIMES SQUARE
Manhattan

Common Ground's first residence and the largest supportive housing project in the nation.

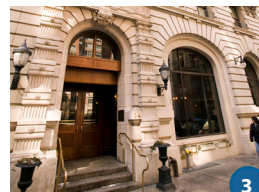
- Opened 1991
- 652 Units
- Mix of low-income working persons and formerly homeless single adults
- Support services provided by the Center for Urban Community Services (CUCS)
- Listed on the National Register of Historic Places
- \$50 million



2
THE DOROTHY ROSS FRIEDMAN RESIDENCE
Manhattan

Owned by The Actors Fund and managed by Common Ground, provides housing to formerly homeless individuals and low-income working professionals, many in the arts and entertainment industry.

- Opened 1996
- 178 Units
- Elderly, low-income working professionals and people living with HIV/AIDS
- Support services provided by The Actors Fund
- On-site, free medical clinic



3
THE PRINCE GEORGE
Manhattan

Common Ground transformed the Prince George Hotel into permanent supportive housing.

- Opened 1999
- 416 Units
- Mix of low-income working persons and formerly homeless single adults
- Support services provided by the Center for Urban Community Services (CUCS)
- Restored Prince George Ballroom event space
- CSA program brings fresh, affordable produce to tenants and local community
- \$40 million



4
THE CHRISTOPHER
Manhattan

Home to our first Foyer program, run by Good Shepherd Services. The Foyer provides housing and support to youth aging out of foster care or housing needy.

- Opened 2004
- 207 Units (40 Foyer Units)
- Mix of low-income working persons and formerly homeless single adults, as well as youth in the Foyer program
- Support services provided by the Center for Urban Community Services (CUCS)
- Site of the former Robert McBurney YMCA
- \$32 million



5
THE SCHERMERHORN
Brooklyn

Common Ground's first new construction project.

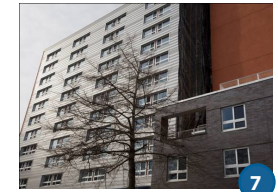
- Opened 2009
- 217 Units
- Mix of low-income working adults from the arts and entertainment industry and formerly homeless single adults
- Support services provided by The Actors Fund and CUCS
- Green construction
- On-site community theater
- Part of larger downtown Brooklyn redevelopment plan
- \$59 million



6
THE BROOK
Bronx

Common Ground's first residence in the Bronx.

- Opened 2010
- 190 Units
- 120 formerly homeless single adults, many with special needs
- 70 low-income working adults from the South Bronx
- Support services provided by Bronx Works
- 2,400 sq. ft. community space
- LEED certified
- \$43 million



7
THE LEE
Manhattan

The Lee is home to Common Ground's second Foyer Program. Run by The Door, the Foyer provides housing and support services to youth aging out of foster care or housing needy.

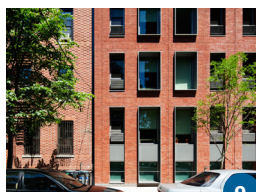
- Opened 2010
- 263 Units
- 104 formerly homeless single adults, many with special needs
- 103 low-income working adults from the Lower East Side
- 55 Foyer youth
- LEED certified
- \$59 million



8
THE DOMENECH
Brooklyn

The Domenech is Common Ground's first housing for seniors.

- Opened 2011
- 72 Units
- 28 units for homeless seniors with special needs. 44 for low-income seniors in the Brownsville area
- LEED certified
- \$24 million



9
THE HEGEMAN
Brooklyn

Affordable housing for formerly homeless and low-income adults in Brownsville, Brooklyn.

- Opened 2012
- 161 Units
- 100 formerly homeless single adults
- 61 low-income working adults at or below 60% of the area median income
- LEED certified
- \$43 million



10
THE LENNIGER RESIDENCES
Bronx

Owned by CUCS and managed by Common Ground, The Lenniger offers housing for formerly homeless individuals and low income individuals and families.

- Opened 2011
- 92 Units
- Low-income individuals and families and formerly homeless single adults
- Support services provided by CUCS



11
BOSTON ROAD
Bronx | in construction

Funded in part by Medicaid savings, Boston Road will improve the lives of seniors who are high cost users of healthcare.

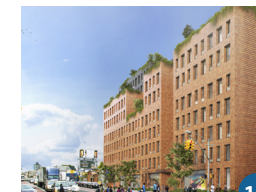
- Opening 2015
- 154 Units
- Low-income individuals and formerly homeless single adults
- \$47 million



12
LA CENTRAL
Bronx | in pre-development

Part of a massive revitalization project in the South Bronx.

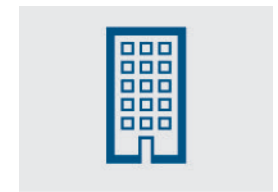
- Opening 2017
- 160 affordable housing units, 96 of which will serve as supportive housing for formerly homeless veterans and New Yorkers living with HIV/AIDS
- YMCA and daycare facilities
- Restaurant and retail space



13
WEBSTER AVENUE
Bronx | in pre-development

Comprised of two adjacent buildings, Webster Avenue will not only be our second-largest residence, but also our first foray into family housing.

- 190 supportive housing units for formerly homeless and low-income individuals
- 228 units for low- and very low-income families



SCATTER SITE
Different Locations

The Scatter Site program provides individualized case management to clients living in subsidized rental apartments across New York City.

- Apartments in the Bronx (78), Brooklyn (41), and Queens (4)
- Common Ground case managers help identify support services in the community

PERMANENT HOUSING CT & UPSTATE NY



FUTURE DEVELOPMENT New York City

Common Ground continues to pursue new opportunities to further our mission of providing affordable and supportive housing to New Yorkers in great need.



14

THE BETTY RUTH AND MILTON B. HOLLANDER FOUNDATION CENTER Hartford, Connecticut

- Opened 2009
- 70 Units
- Low-income families in downtown Hartford



15

CEDARWOODS

Willimantic, Connecticut

Located on a beautiful 19-acre site overlooking protected wetlands, Cedarwoods creates affordable homes in an area of rural Connecticut where low-income housing is scarce.

- Opened 2012
- 60 Units
- Low-income working adults, 10% veterans
- \$14 million



16

EASTMAN COMMONS

Rochester, New York

Eastman Commons has been transformed from a deteriorating, vacant and contaminated manufacturing building into a new affordable residential housing complex.

- Opened 2012
- 80 Units
- Low-income individuals and formerly homeless single adults from the Rochester area
- \$15 million

TRANSITIONAL HOUSING



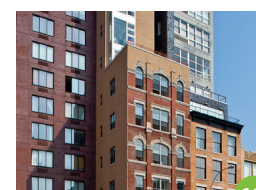
17

MONTROSE VETERANS RESIDENCE

Montrose, New York

Montrose provides transitional housing for veterans, and offers the support they need to stabilize their lives.

- Opened 2008
- 96 Units
- Common Ground provides on-site support services including assistance with re-establishing contact and relationships with family, finding work, saving for an apartment, and securing a home of their own in the community
- \$876,000



18

THE ANDREWS

Manhattan

A reinvention of the "flophouse," The Andrews provides private, safe, clean and affordable short-term accommodations to chronically homeless adults.

- Opened 2009
- 146 Units
- Small private rooms with communal bathrooms and living spaces, meals, and links to critical supports like medical care and individualized case management
- Partnering with the Architectural League of New York, Common Ground held an architectural competition for the design of the units.
- \$14 million

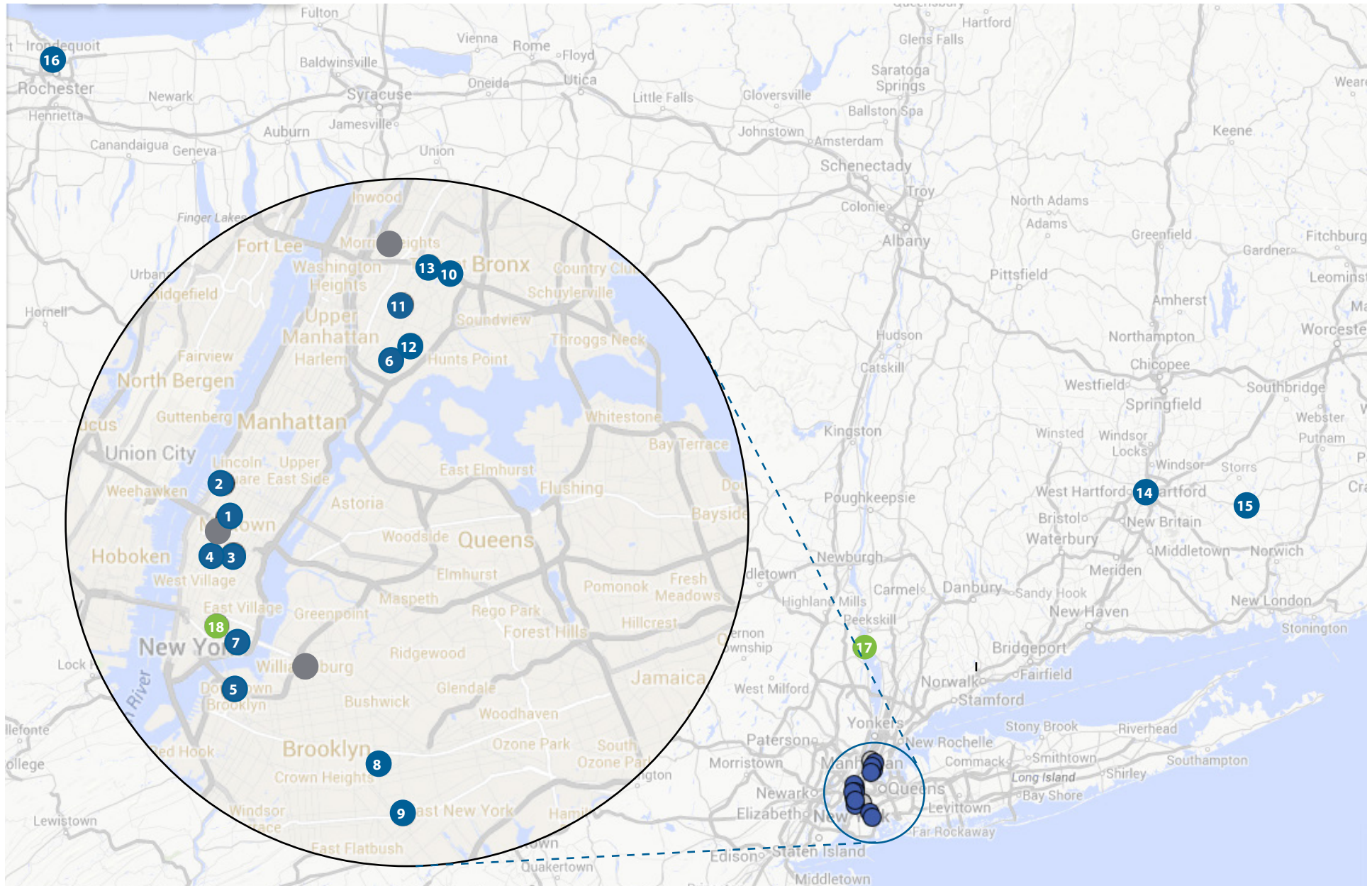


STABILIZATION BEDS

Different Locations

We also have 84 stabilization beds – first-step housing with minimal social services provided.

Locations Buildings and program sites in New York City and beyond



● = permanent housing ● = transitional housing ● = Common Ground offices